

Textile Straight-warp belt FIRESHIELD (DX FLEX MHS)

Applications :



Different cover properties:
refer to the website.

Thickness and weight of the belts:
according to technical sheets on request.

Minimum diameter of use of the drums:
see details on Depreux brochures aboveground
application.

Joining procedures:
available on request.

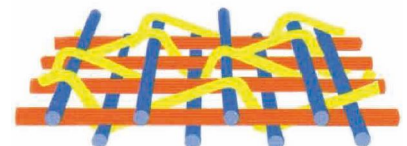
Belt structure

The Fireshield belt has excellent properties of resistance to tearing and resistance to heavy impacts.

Thanks to a thin carcass, Fireshield can also be used with smaller pulley diameters than textile ply or steel-cord belts. Ability of Fireshield is much better than a ply conveyor belt.

Fireshield is therefore used on heavy duty conveyors where resistance to the effects of heavy impacts and resistance to tearing are important characteristics, typically seen in quarrying, open cast mining and steel industries... or in applications where heavy-duty and yet narrow belts are required, such as in tunneling.

Fireshield is a textile belt straight-warp with a carcass composed of one or two plies. Each ply is with straight-warp, protected on both top and bottom by weft lines in textile as shown in the opposite drawing.



The straight-warp is composed of thick twisted (textile cables) in polyester. This warp is inserted between two textile weft made of thick twisted polyamide. The warp and the weft are connected by a small fine wire which ensures the maintenance of textile.

For high resistance, it is better to use 2 plies straight-warp, separated by an interply in rubber to facilitate splicing.