

## Textile Straight-warp belts DX-FLEX or DX-FLEX RT

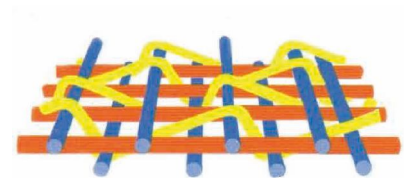
### Belt structure

The DX-FLEX belt has, on the one hand, very good tear resistance, impact resistance and good stapling resistance. On the other hand, it has a lower elongation than the multiply belts and it can operate with lower drum diametres, given its smaller thickness and a one-piece carcass construction.

DX-FLEX is therefore used on conveyors where the impacts and risks of tearing are important, typically seen in quarrying, open cast mining and steel industries...

The DX-FLEX RT is a variant with superior resistance to stapling, tearing and impact.

DX-FLEX is a textile belt straight-warp with a carcass composed of one or two plies. Each ply is with straight-warp, protected on both top and bottom by weft lines in textile as shown in the opposite drawing.



The straight-warp is composed of thick twisted (textile cables) in polyester. This warp is inserted between two textile weft made of thick twisted polyamide. The warp and the weft are connected by a small fine wire which ensures the maintenance of textile.

For high resistance, it is preferable to use 2 plies straight-warp, separated by an interply in rubber to facilitate splicing.

### Applications :



Different cover properties:  
refer to the website.

Thickness and weight of the belts:  
according to technical sheets on request.

Minimum diametre of use of the drums:  
see details on Depreux brochures aboveground  
application.

Joining procedures:  
available on request.